



Mining
Remediation
Authority



Coalsnaughton community update

2 June 2026

Carl Banton - Chief Operations Director

Zoe Rose-Higgins - Public Safety and Development Director

Incident overview / Immediate response

Ground movement was reported at Benbuck View from 18 May

Emergency services attended quickly and supported the initial response

Properties were evacuated as a precaution as the situation developed – services then disconnected



For safety area expanded to include:

- Dunmoss View
- Nechtan Drive
- Langour

Incident declared major on 27 May

We understand this is a distressing and disruptive time for residents





Actions we have undertaken

Structural inspections and surveys

Used specialist techniques (including laser scans / drone surveys) to track movement

Ground investigations ongoing, including drilling, to understand full extent of ground conditions

Survey markers and monitoring equipment installed across Benbuck and now extended into the surrounding streets

Movement is ongoing - we don't yet know the cause of movement, our investigations are trying to establish this





Actions we have undertaken

Site expanded to include all impacted streets

Security fencing, CCTV and access controls in place

Continued supervised access for residents to collect belongings at set times

Maintained daily presence on site to answer questions and provide support

Continued communication and support for residents in partnership with the council



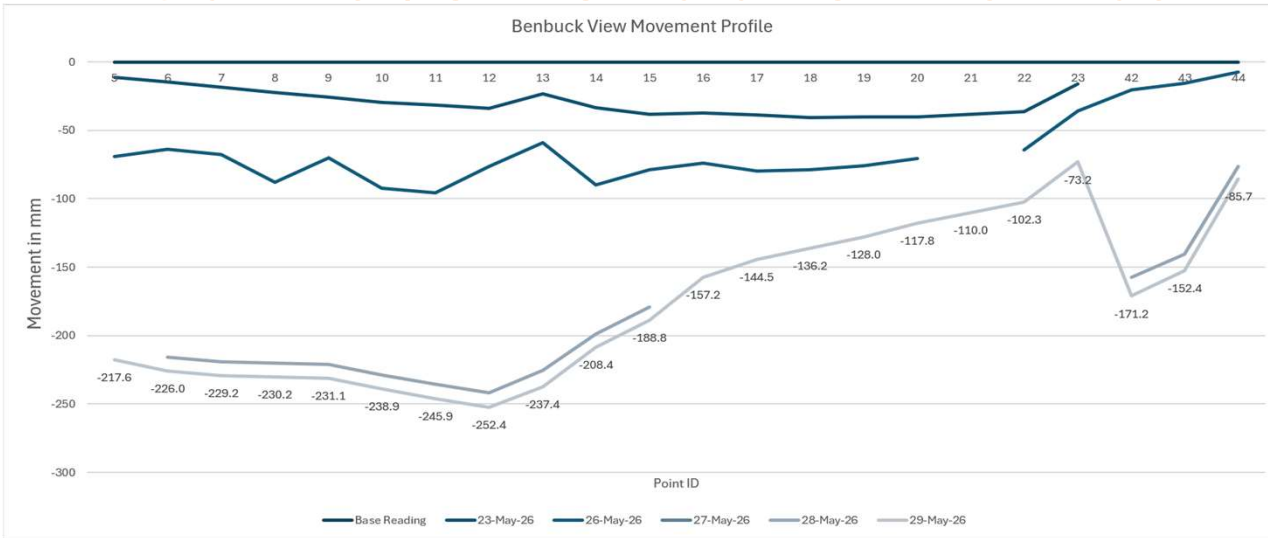
What movement the monitoring is showing



What movement the monitoring is showing



What movement the monitoring is showing

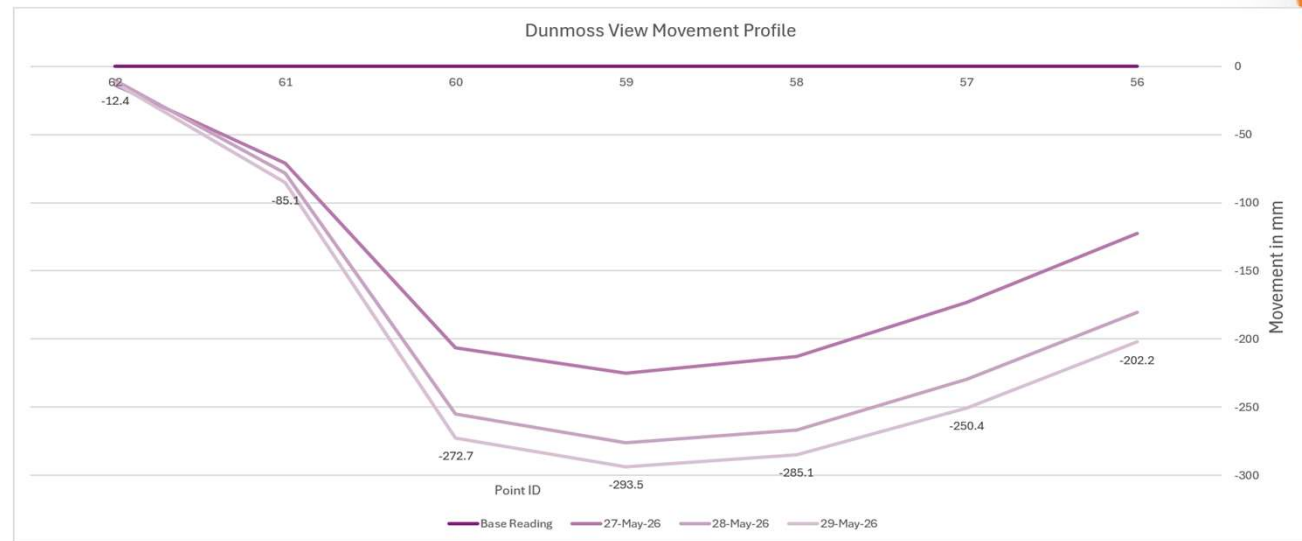


Benbuck
280mm recorded movement
Currently moving 5-10mm/day

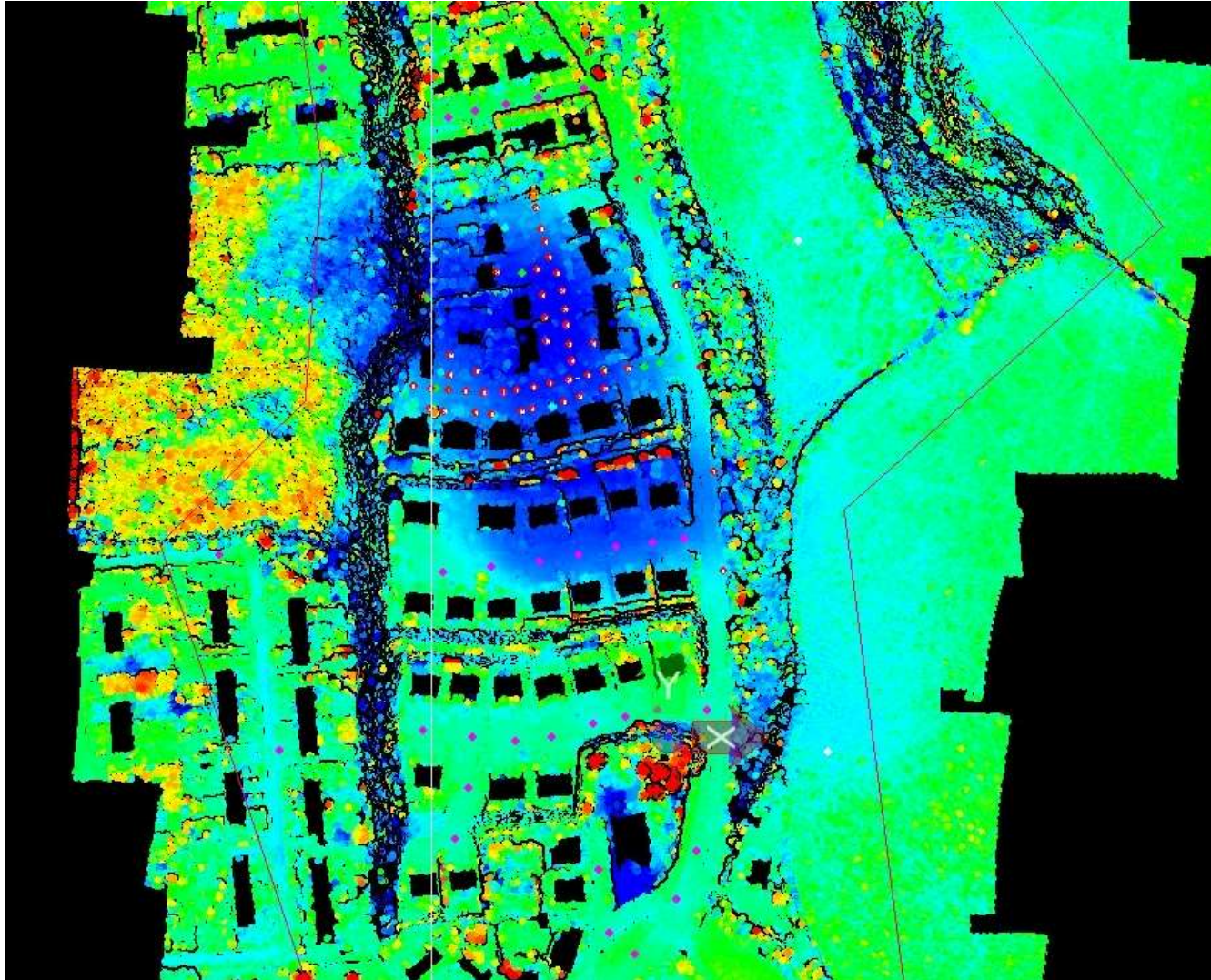
Dunmoss
Over 300mm total movement
Currently moving 10 - 15mm/day

The Glen
190mm total movement (one point)
Currently moving 10 - 15mm/day

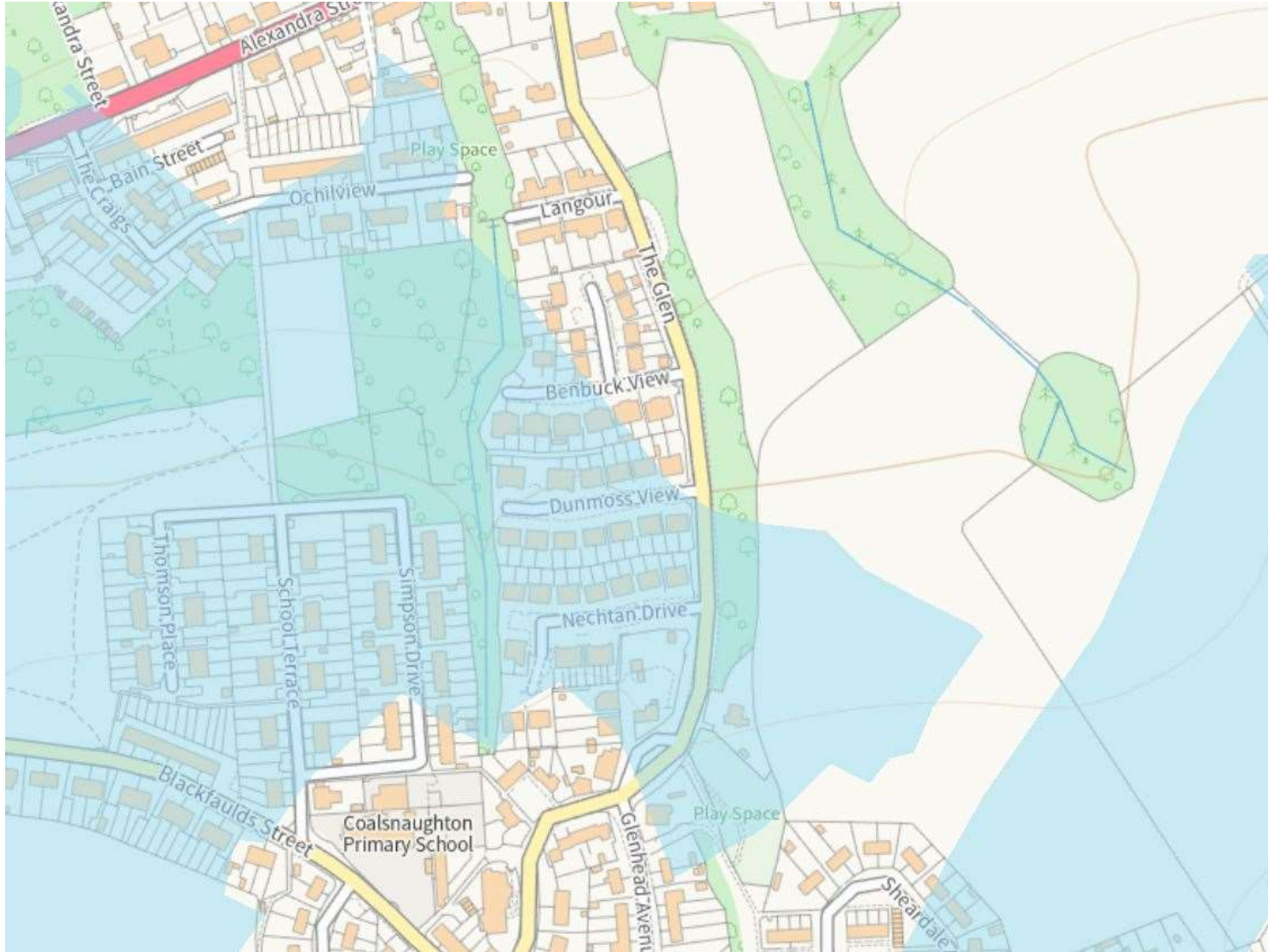
Nechtan / Langour
No movement



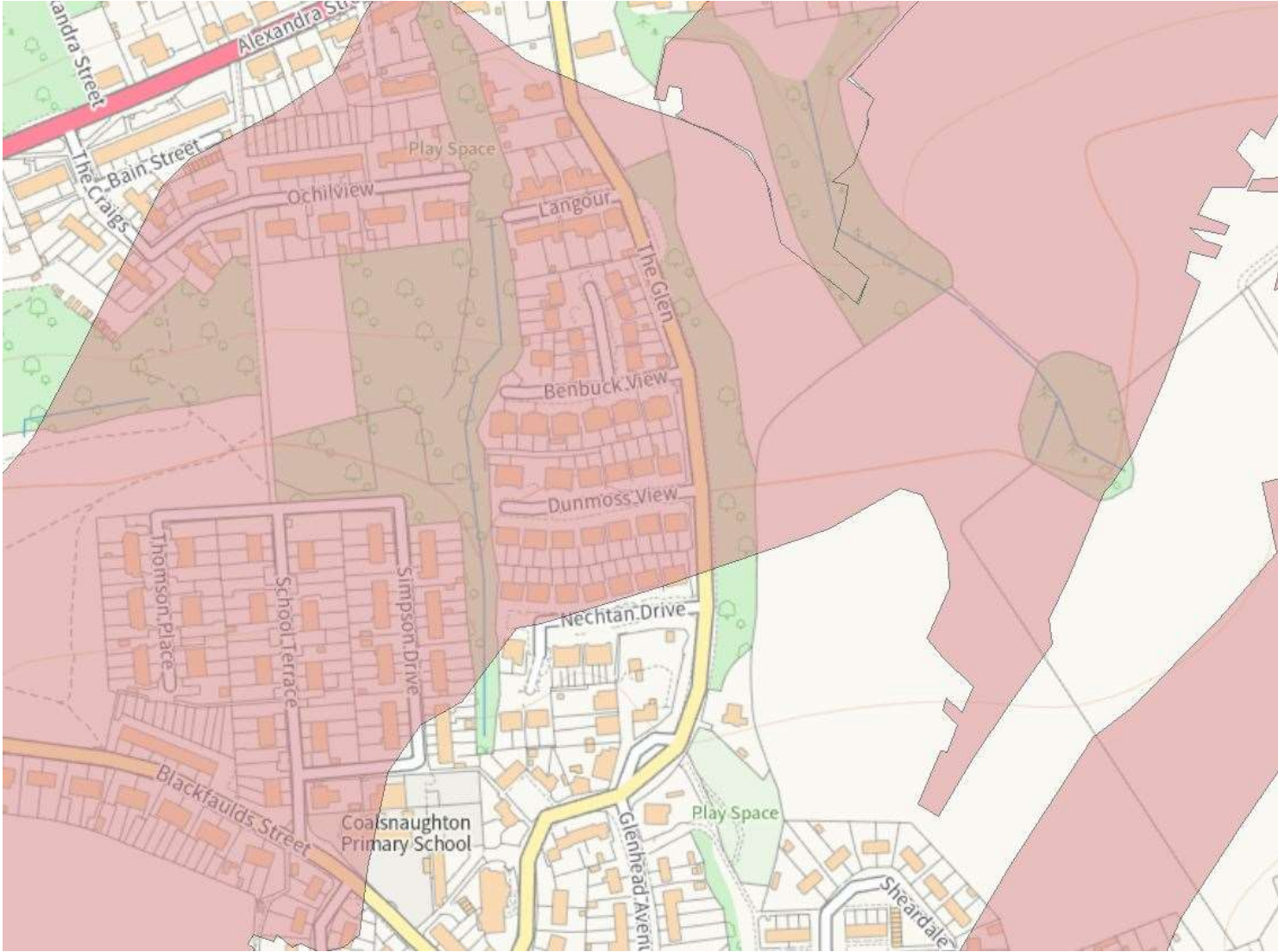
What movement the monitoring is showing



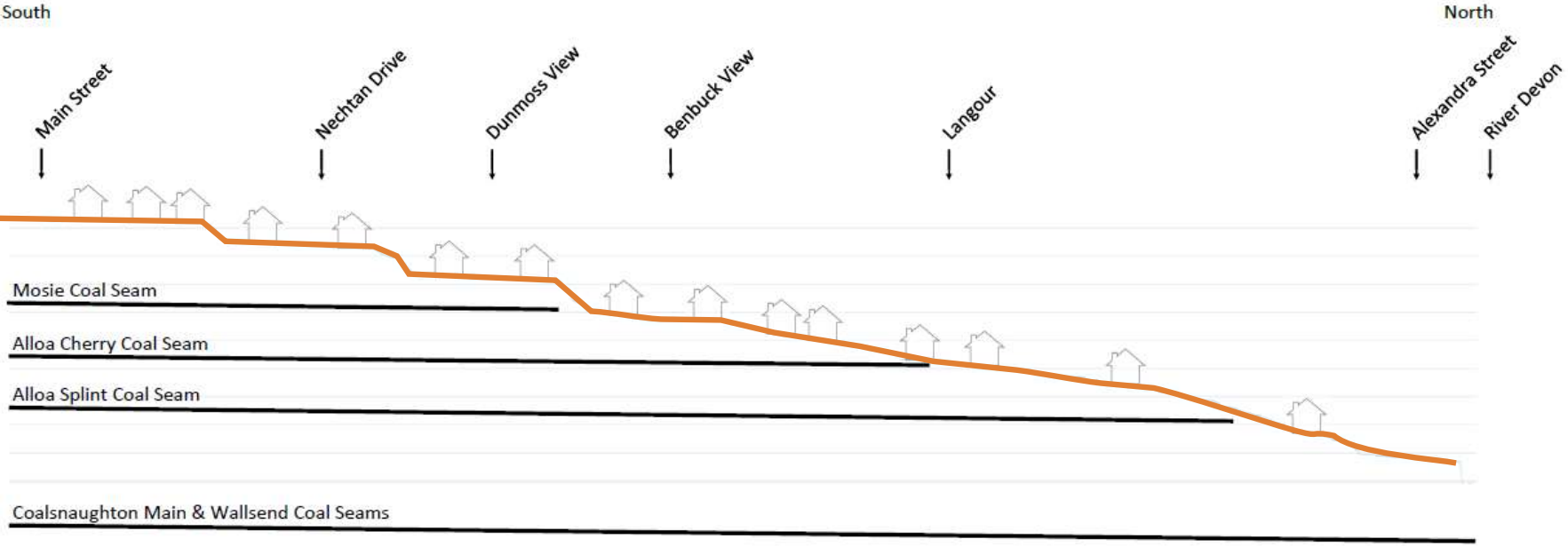
Mining beneath the area - Alloa Splint Seam



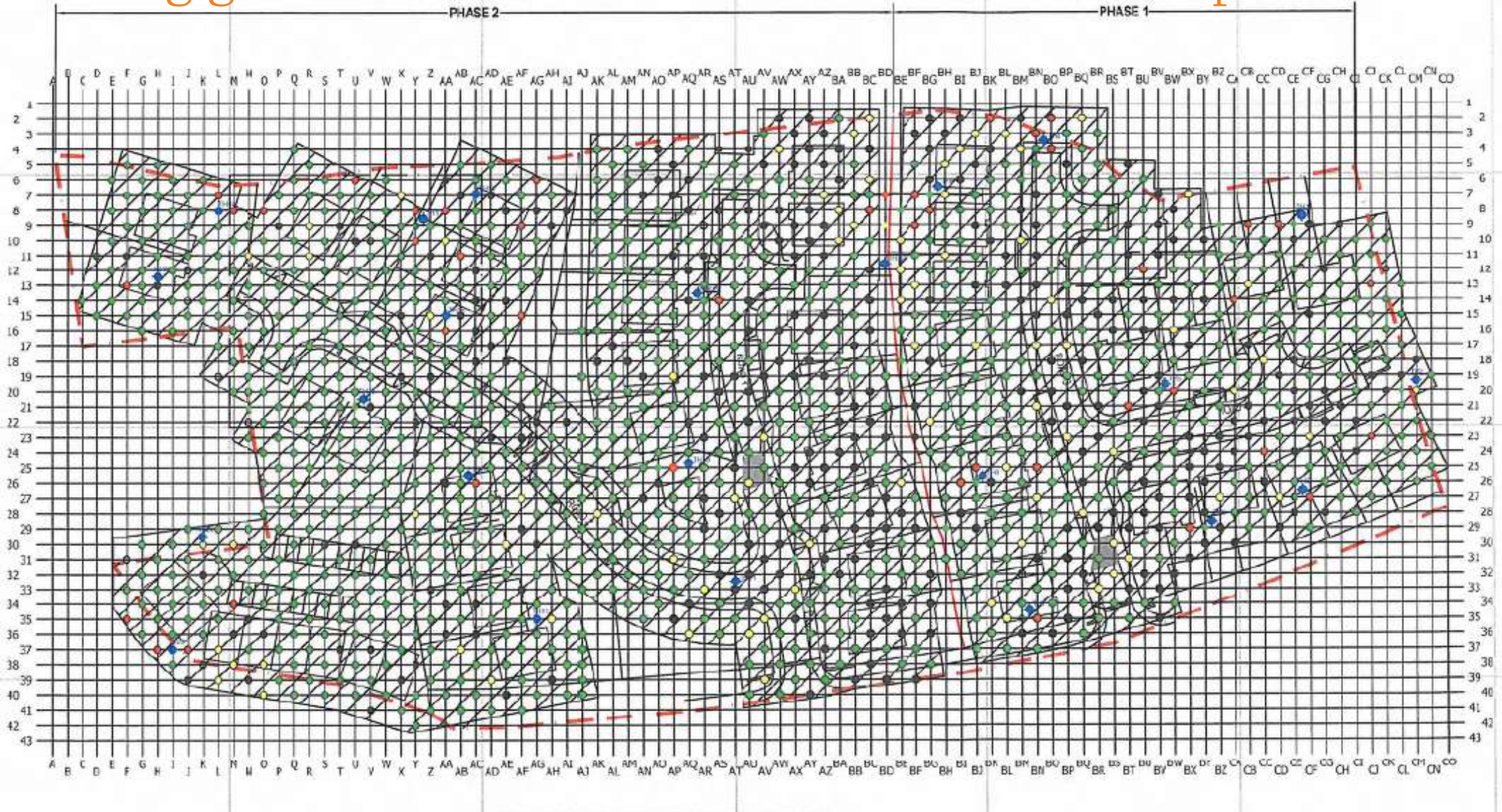
Mining beneath the area - Coalsnaughton Main seam



Mining beneath the area - Cross section



Mining ground stabilisation work before development



Next steps

LRP Multi Agency Response - keeping people safe and their well being remains our priority

Continue ground monitoring and data collection

Cause is unknown - investigation work will take more time to determine this

Maintain controlled access to properties and safety measures

Support with insurance queries

Regular communication and updates





Questions?