



Mining
Remediation
Authority



Dalkeith community update

13th May 2026

Zoe Rose-Higgins

Interim Public Safety and
Development Director

Rachael Langfield

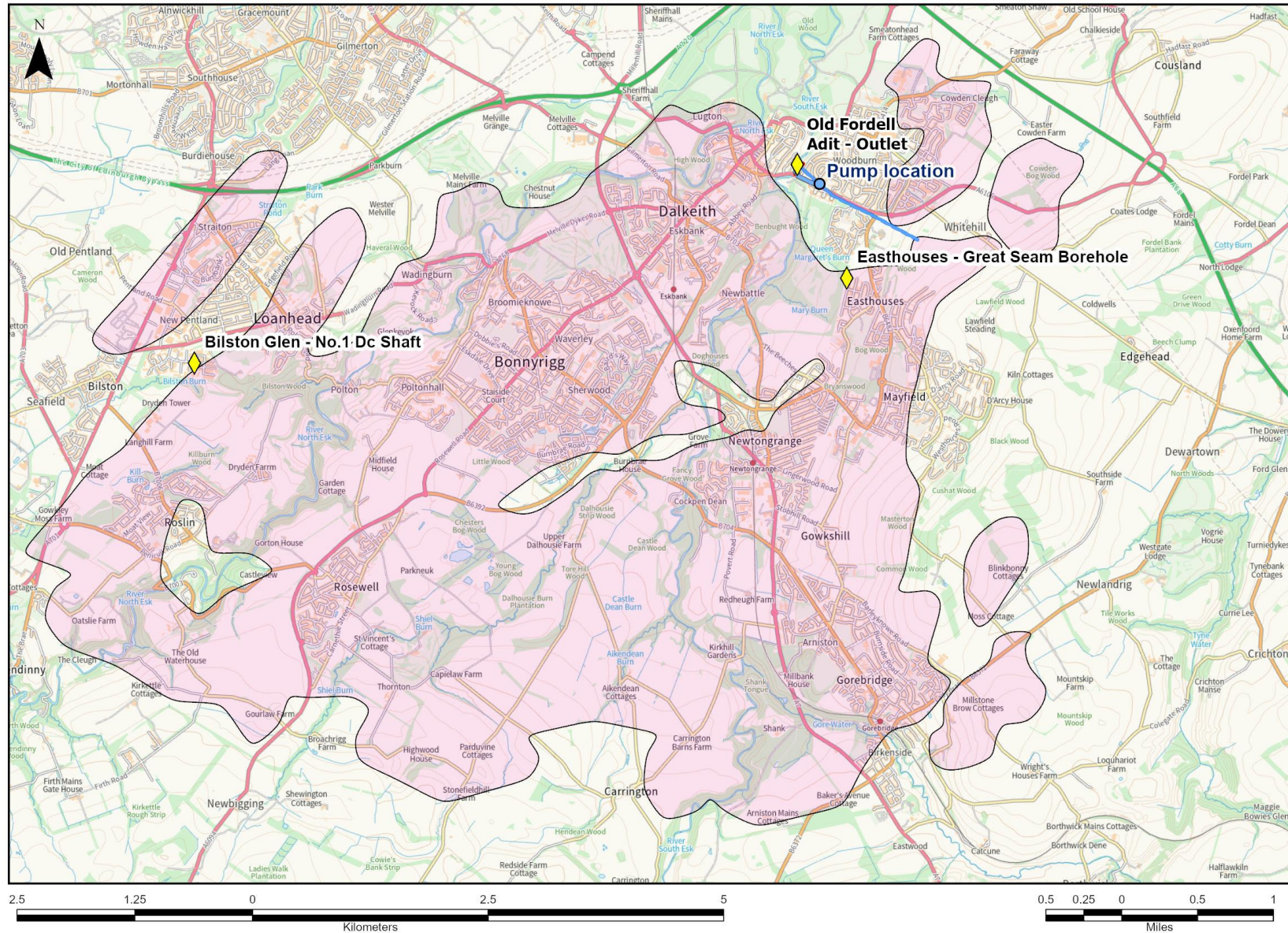
Head of Environment Project
Delivery - Coal

Recap

- On the 7th January 2026, the flow from Old Fordell Adit suddenly decreased
- Water levels in the mining block immediately began to rise.
- Investigations were undertaken to establish a method of controlling the rise in mine water levels
- A suitable shaft was located at 7 Woodburn Court
- Emergency pump and an overground main, along Newmills Road, were installed to control the rising water levels
- The overground main discharges into the River South Esk approximately 100m from the original Adit discharge
- These measures halted the rising mine water and have since reduced the level of the mine water within the mining block.

Controlling the mine water levels has reduced the potential risk to land and property to pre-incident levels

What do we mean by the mining block?



Actions since the last community meeting

The following have been actioned since the last community meeting:

- Removal of traffic management on Lauder / Newmills Road
- Opened James Lean Ave junction with Newmills Road to one way traffic
- Opened Woodburn Road junction with Newmills Road to one way traffic



- Provided Pedestrian access at James lean Avenue
- Ongoing discussions with Lothian Buses to reinstate bus routes where possible

Actions since the last community meeting

- Regular communication with the community, local council's and elected members
- Completion of investigation works at 4 Woodburn Road
- Investigations at project site to establish reason of mine water decreased flow

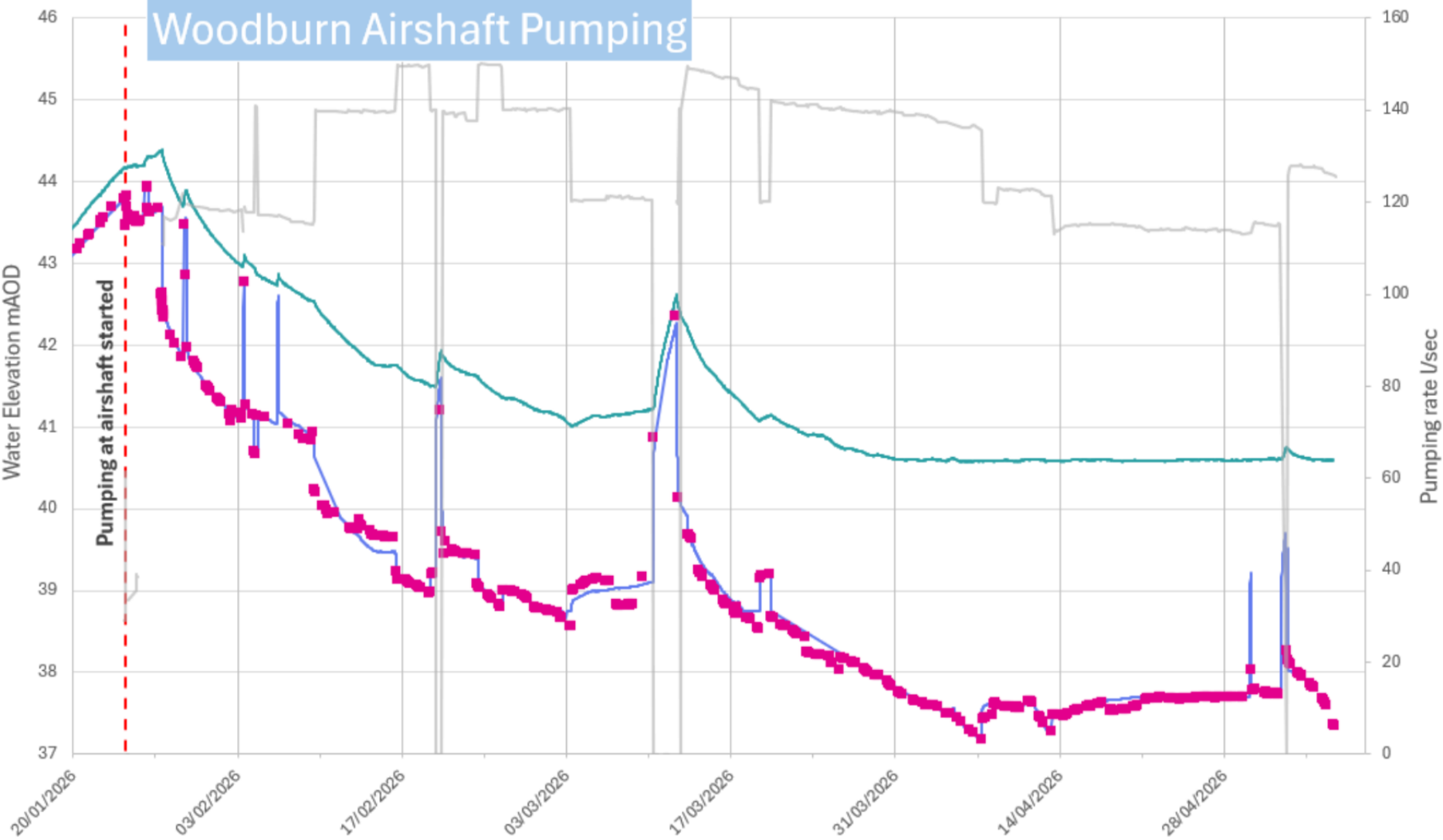


Actions since the last community meeting

- Replaced emergency pump with more suitable pump at 7 Woodburn Court
- Returned mine water levels within the mining block to pre-incident levels
- Development of options to enable above ground pipework to be removed from Newmills Road



Mine water level management



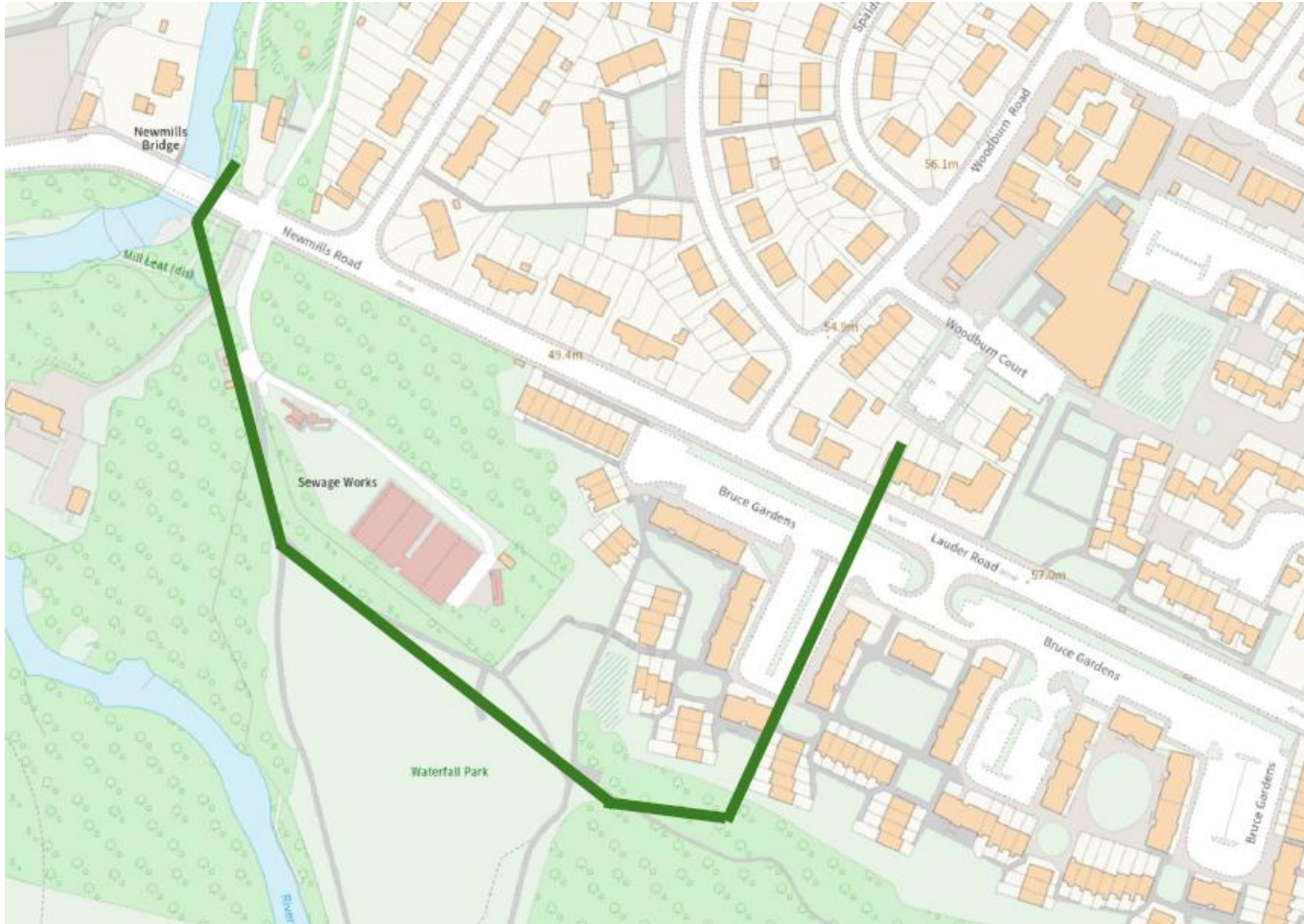
Pipeline route criteria



The construction and operation of the pipeline should:

- Provide a robust and reliable method of transporting the mine water from the shaft at 7 Woodburn Court to the River South Esk
- Enable the quickest possible removal of the overground pipework
- Provide least inconvenience for residents
- Minimum inconvenience for traffic
- Not be susceptible to vandalism
- Minimise crossing through private gardens and / or under properties

Pipeline – preferred route



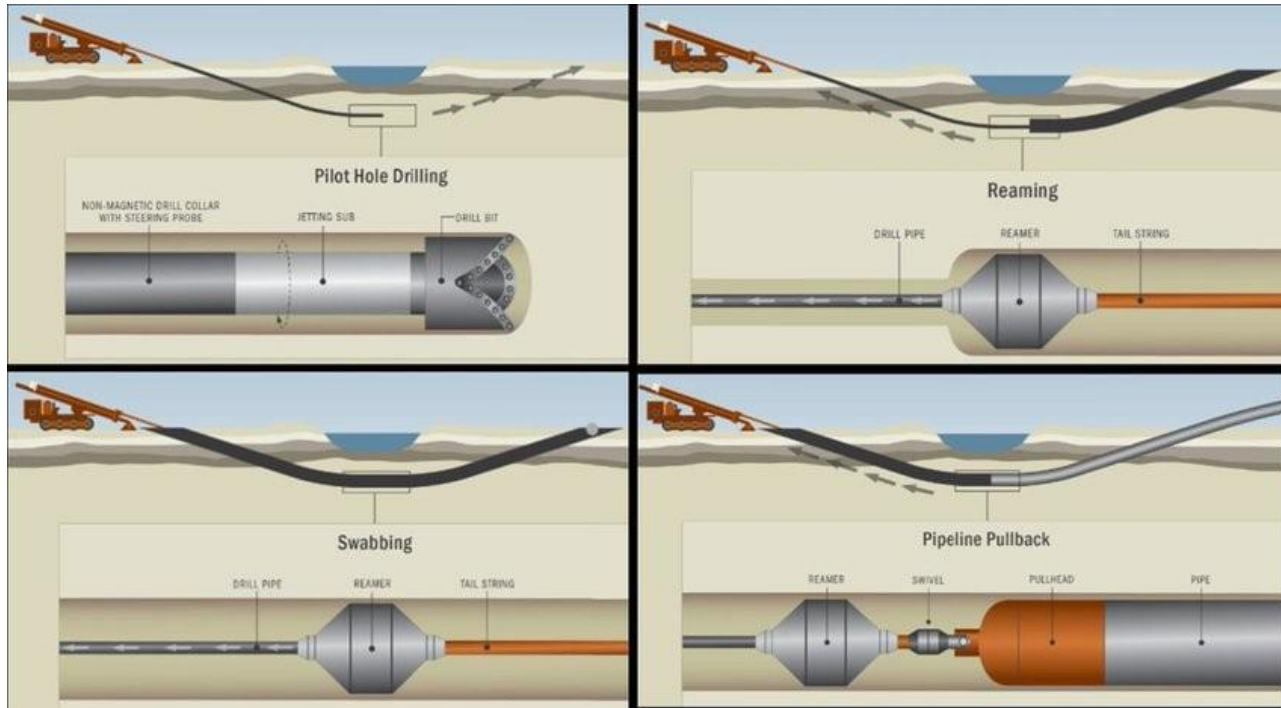
Benefits

- Quickest delivery timescale
- Minimises traffic disruption
- Simpler land ownership
- No complex service diversions

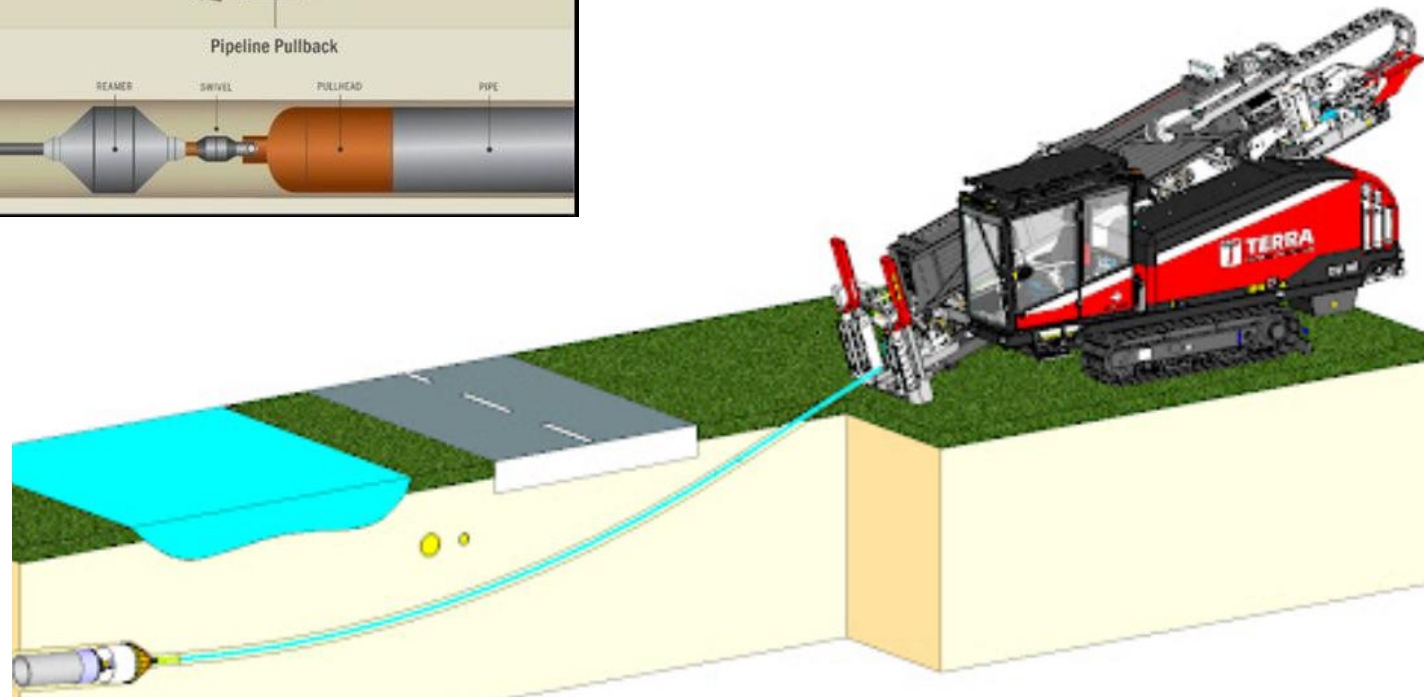
Disbenefits

- Longest overall route
- Impact on park users

Pipeline route – next steps



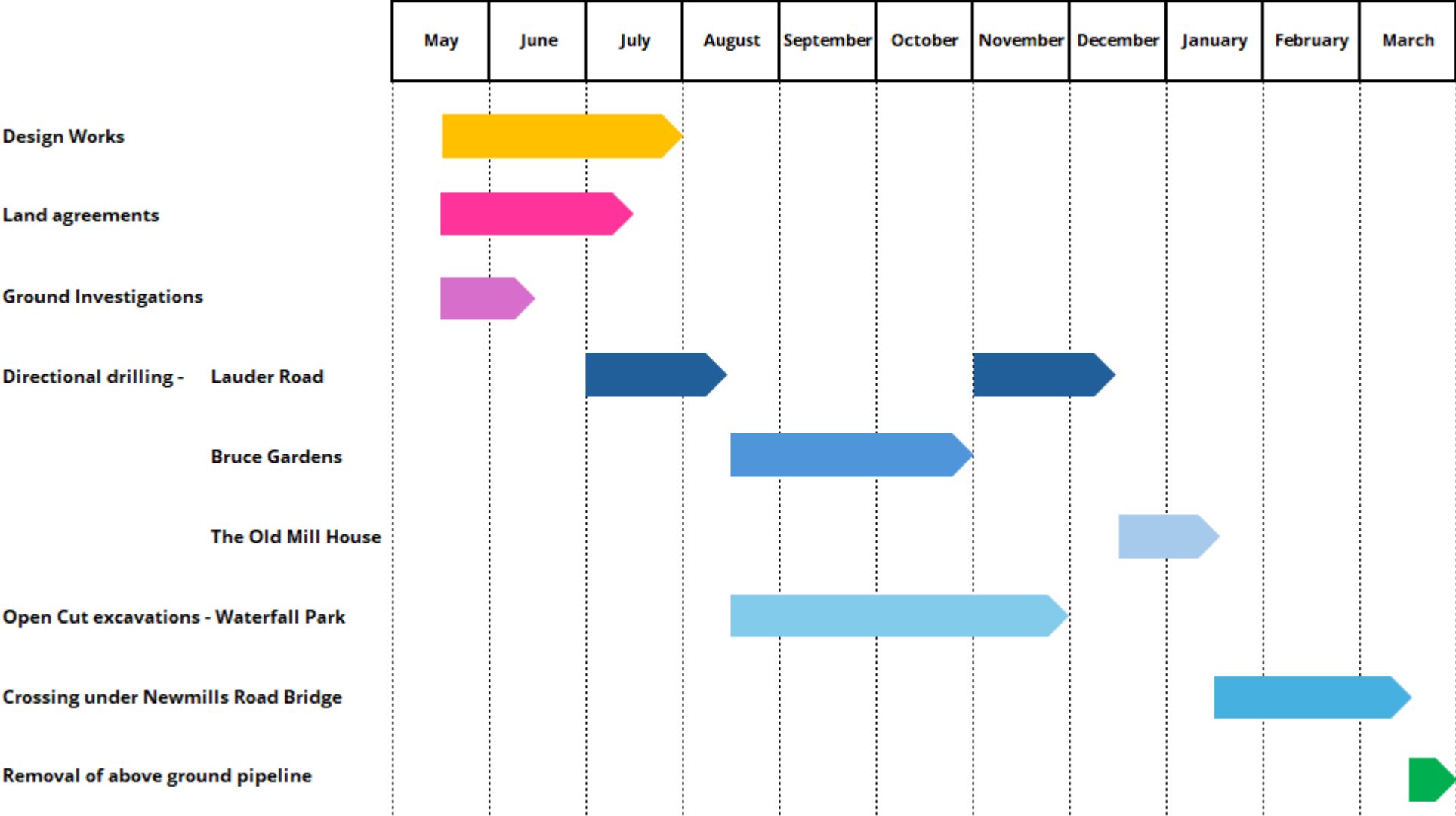
Directional drilling



Pipeline route – next steps



Preferred option route - timescale



Mine Water Treatment Scheme – progress





Questions