



Mining  
Remediation  
Authority



# *P-041629 Camberwell Drive, Ashton-Under-Lyne*

*Residents Meeting  
12 March 2026*



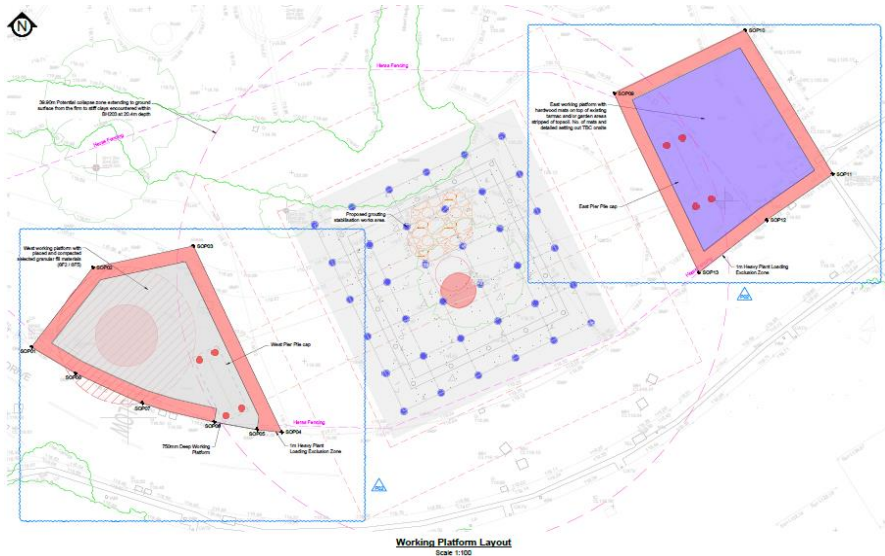
# Compound



# Temporary Working Platform Pile Caps



- Due to poor ground conditions and requirements to work directly over the shaft, temporary platform needed to facilitate stabilisation works
- 2No. pile caps constructed on 8No. reinforced concrete piles



# Temporary Working Platform



- Temporary road closure required to construct platform
- Residents used temporary car park for the duration of closure
- 36m platform constructed and lifted into place in 4 days – largest ever platform
- Road re-opened



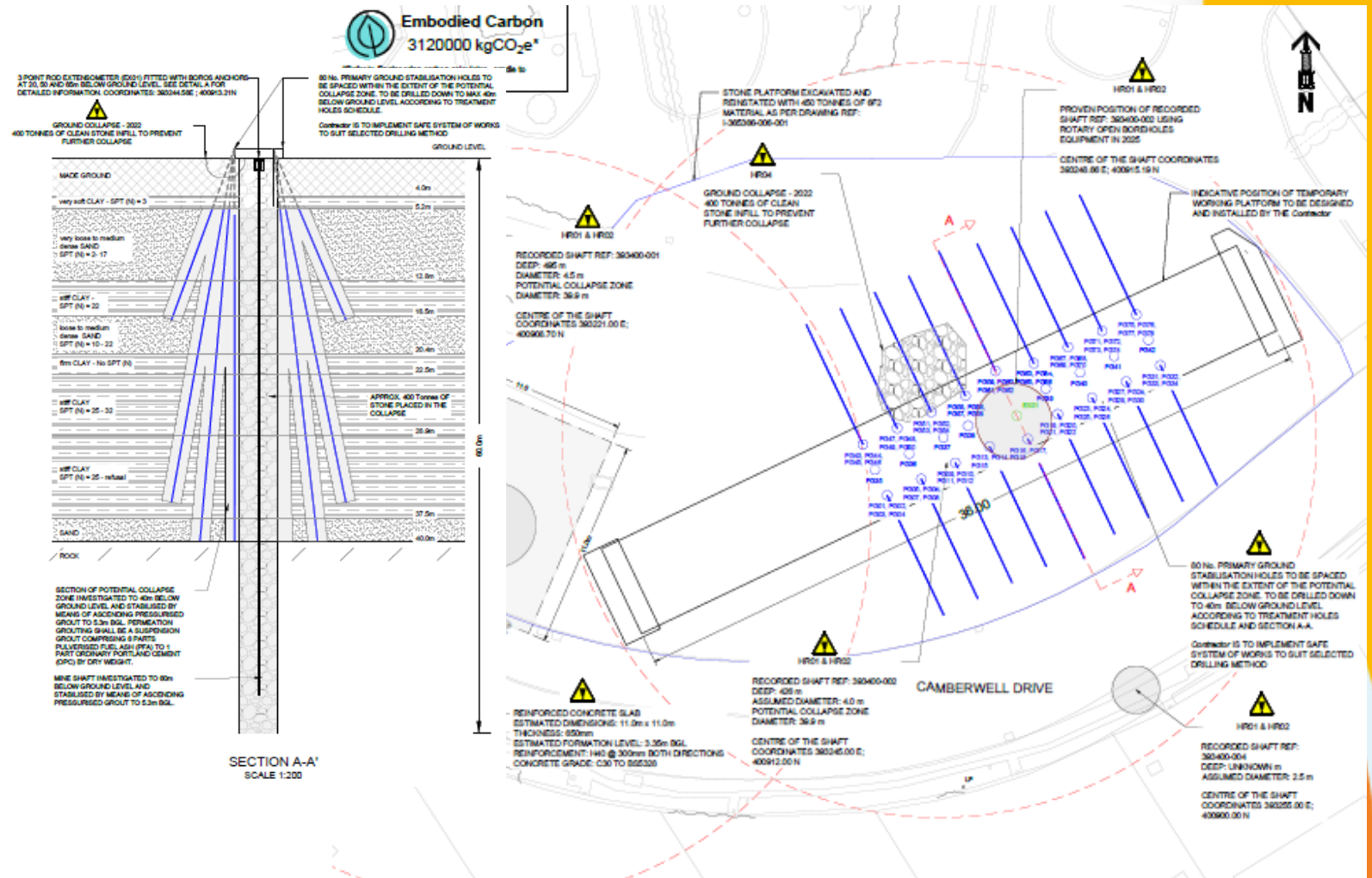
# Temporary Working Platform



# Shaft and Ground Stabilisation



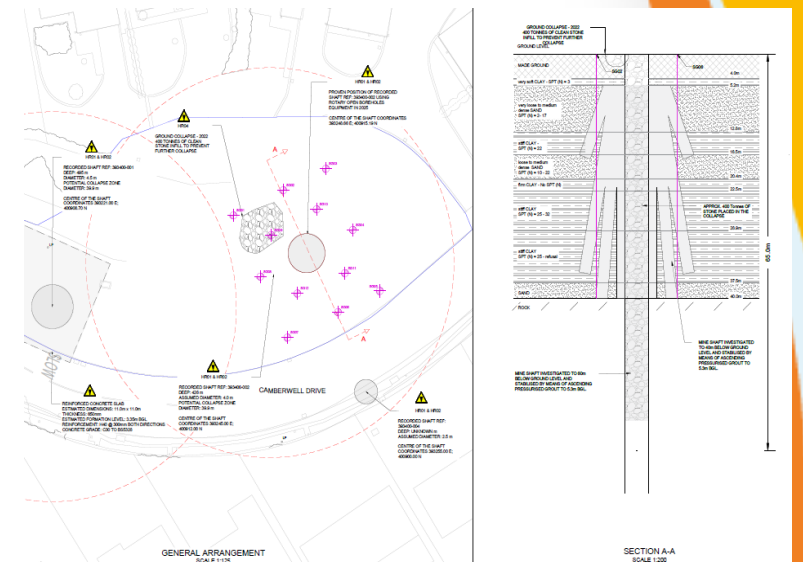
- Shaft position confirmed to be slightly east of recorded position
- Shaft stabilised via 3 No. vertical primary grout holes totalling 214T
- Surrounding ground stabilised via 78 No. vertical and inclined primary grout holes totalling 94.59T
- Delivered on programme



# Platform Removal, Secondary Grout Holes



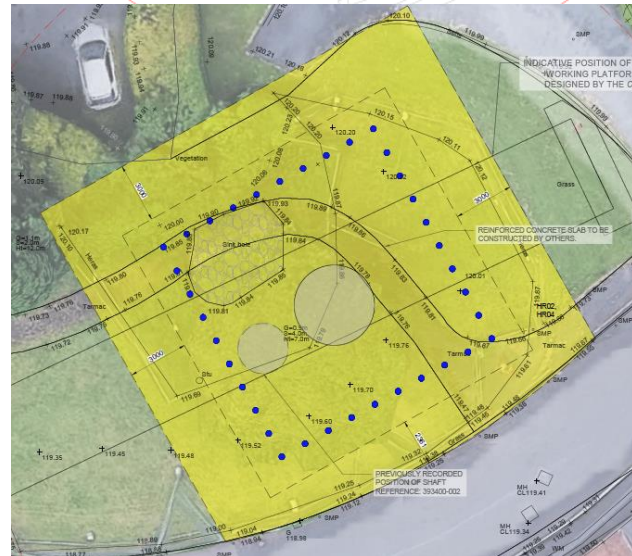
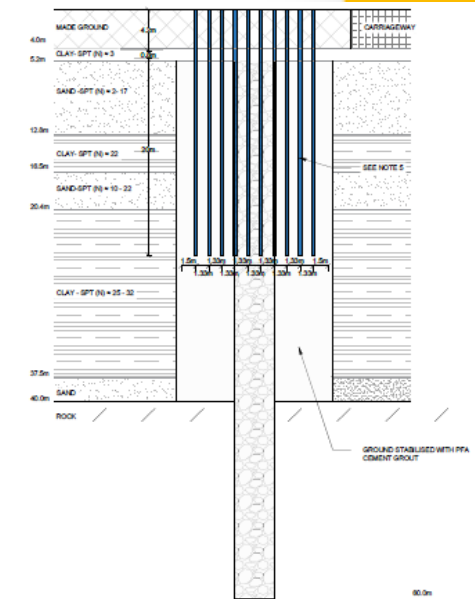
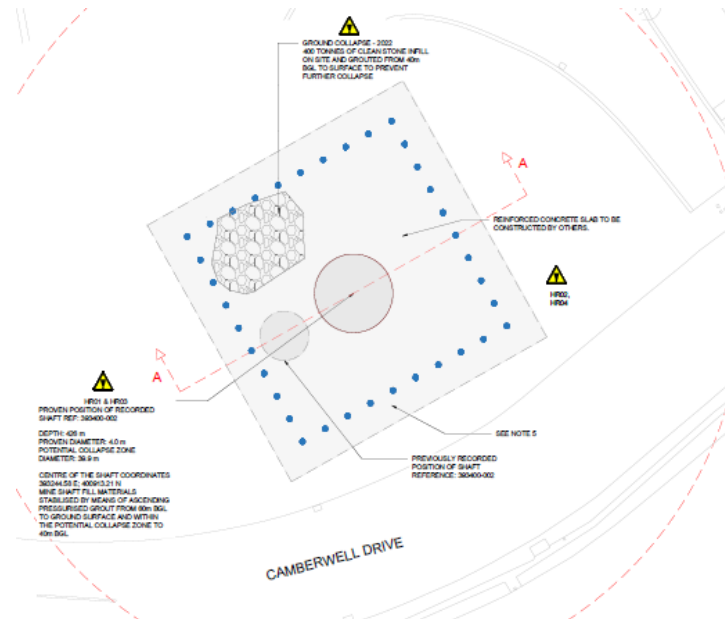
- Road closure again in place for de-construction of platform
- Platform stripped and road open in 4 days
- Stabilisation works undertaken via 12 No. vertical grout holes totalling 23T
- Delivered on time allowing transition into piling phase



# Piling Mat and Pile Foundations



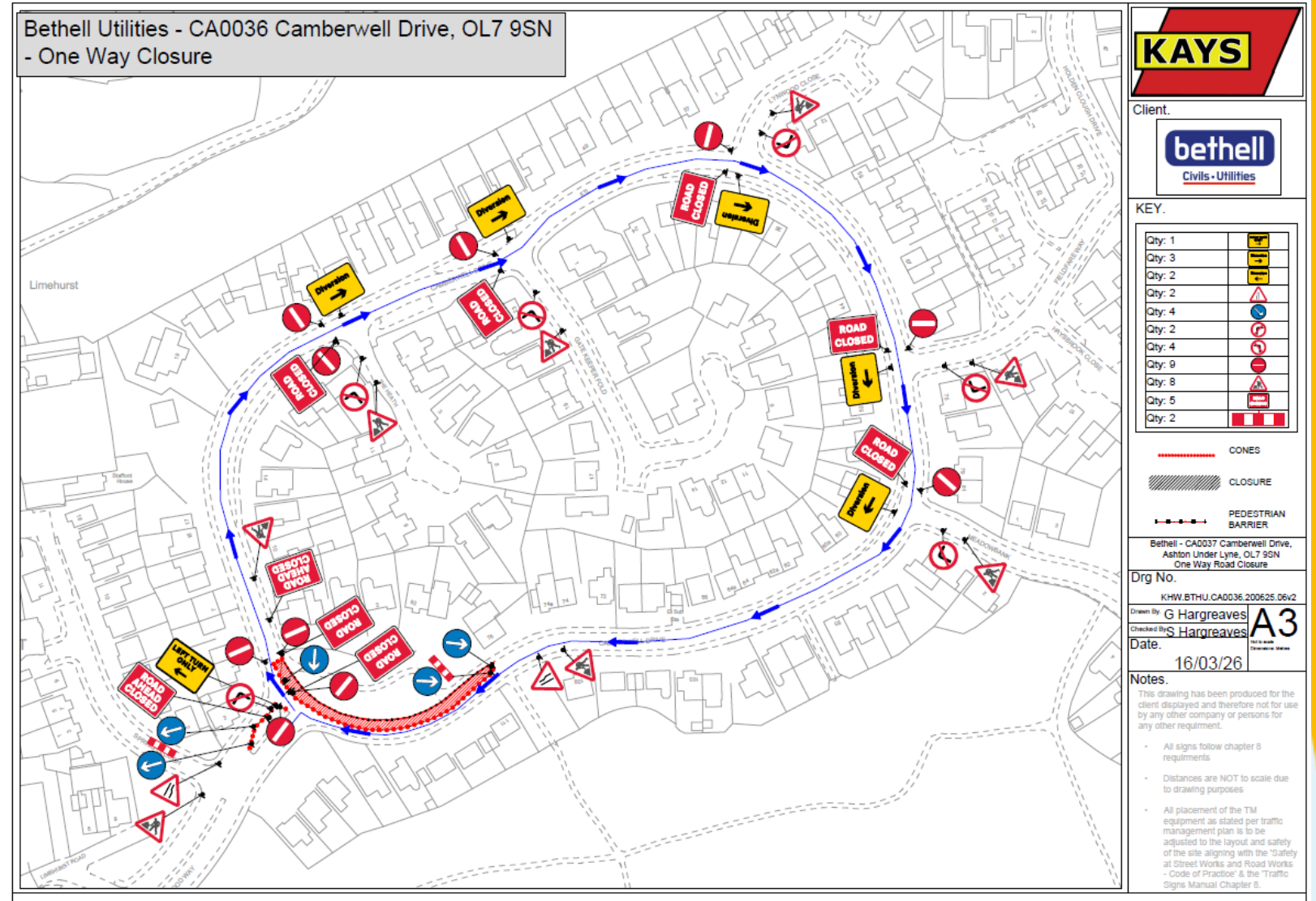
- Traffic management plan developed with local highways to keep contractor and public safe
- 750mm thick pile mat required to distribute weight of excavator and piling rig
- 36 No. reinforced concrete pile foundations to be installed for mine shaft cap
- Piles installed from the surface to a depth of around 25m below ground level



# Traffic Management



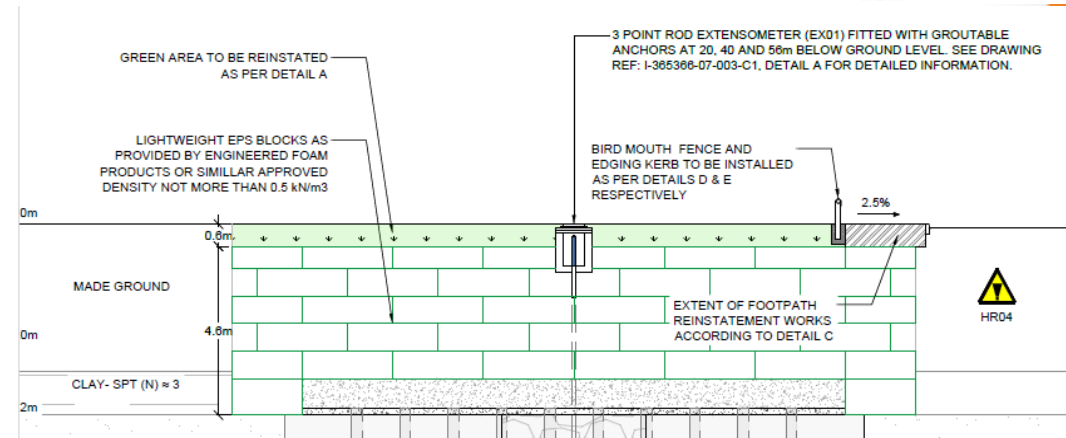
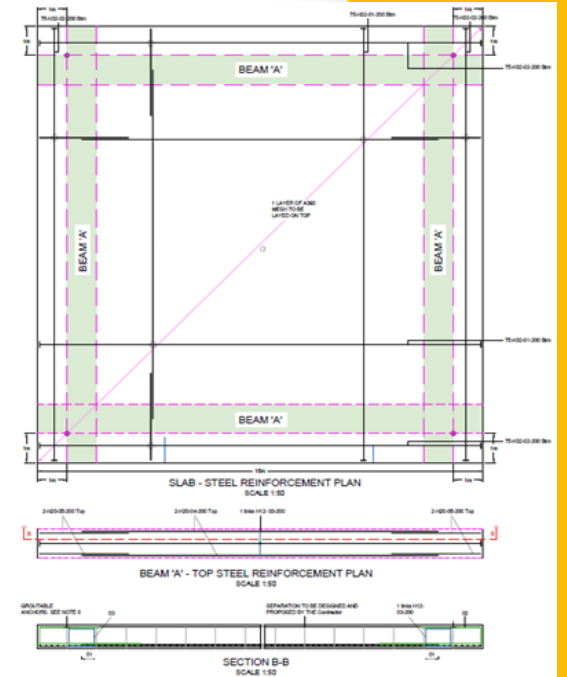
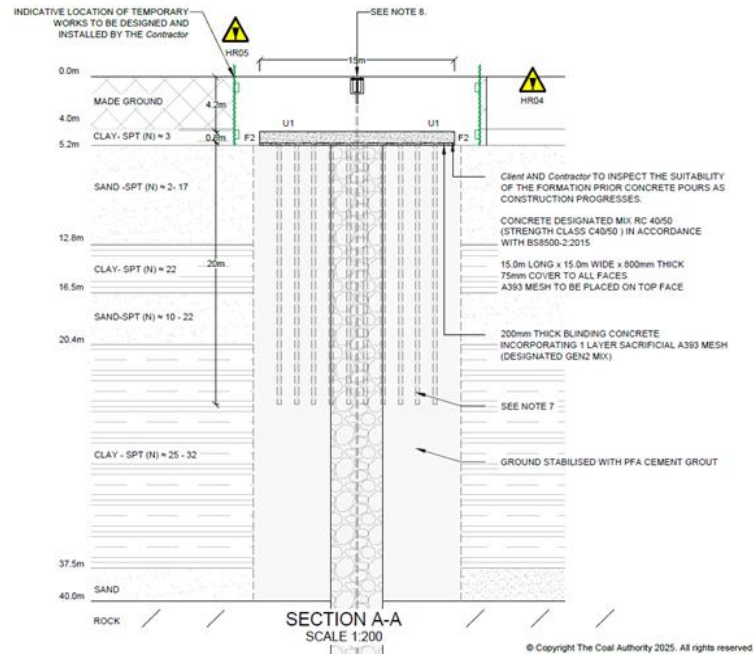
- Bethell Construction have worked in partnership with Tameside Highways to develop traffic management plan
- Estate to be turned into one way circuit incorporating our single lane closure keeping contractors and residents safe
- Provisionally in place for 32 weeks but will be assessed as we progress
- Temporary car park may need to be utilised for the duration



# Capping Works



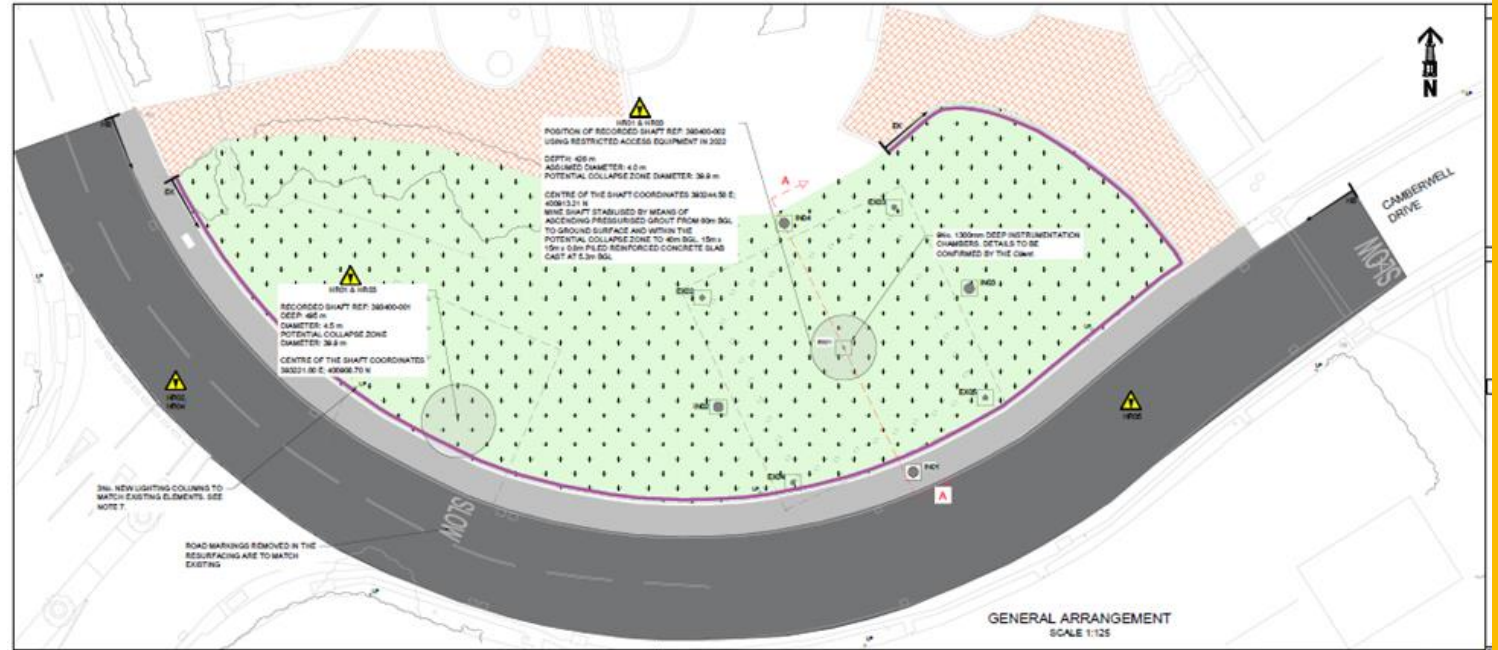
- 17m x 17m excavation to cap formation level, 5m below ground level
- 36No. piles to be cropped as excavation progresses
- Temporary works needed to retain surrounding ground
- Reinforced concrete slab constructed on cropped piles
- Excavation infilled to surface with lightweight EPS blocks to reduce load on cap and piles
- Installation of inclinometers and extensometers



# Reinstatement Works & Monitoring



- Removal of temporary working platform pile caps, temporary car park, and site compound
- Combined reinstatement area of over 4,200m<sup>2</sup>
- New streetlighting to be installed
- Planting of new hedge lines
- Planing and resurfacing of carriageways and residential drives



# Programme Update



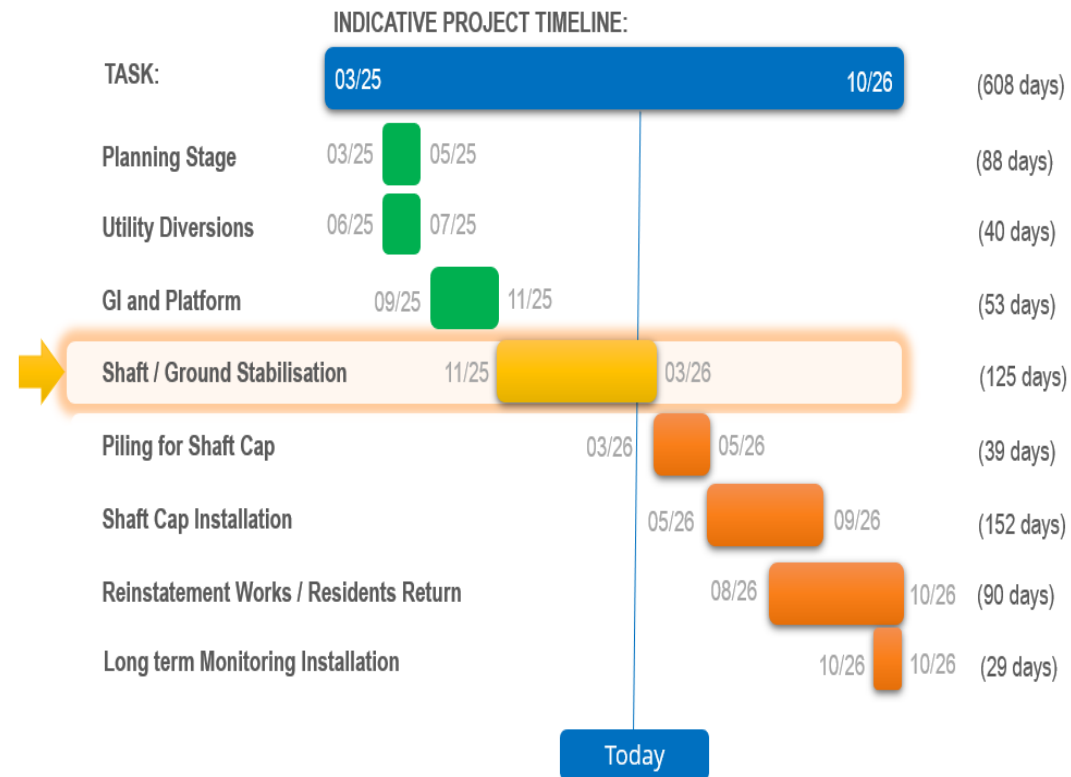
## Completed Phases

- Utility Diversions
- Enabling Works/Platform
- Shaft/Ground stabilisation

## Future phases

- Piling Mat and Pile Foundations
- Capping & Reinstatement
- Completion as planned October 2026
- Period of site monitoring on completion of works into 2027

## Camberwell Drive Programme



STATUS:

- Completed
- In Progress
- Pending



*Questions?*